

SAGE

SCOTTSDALE

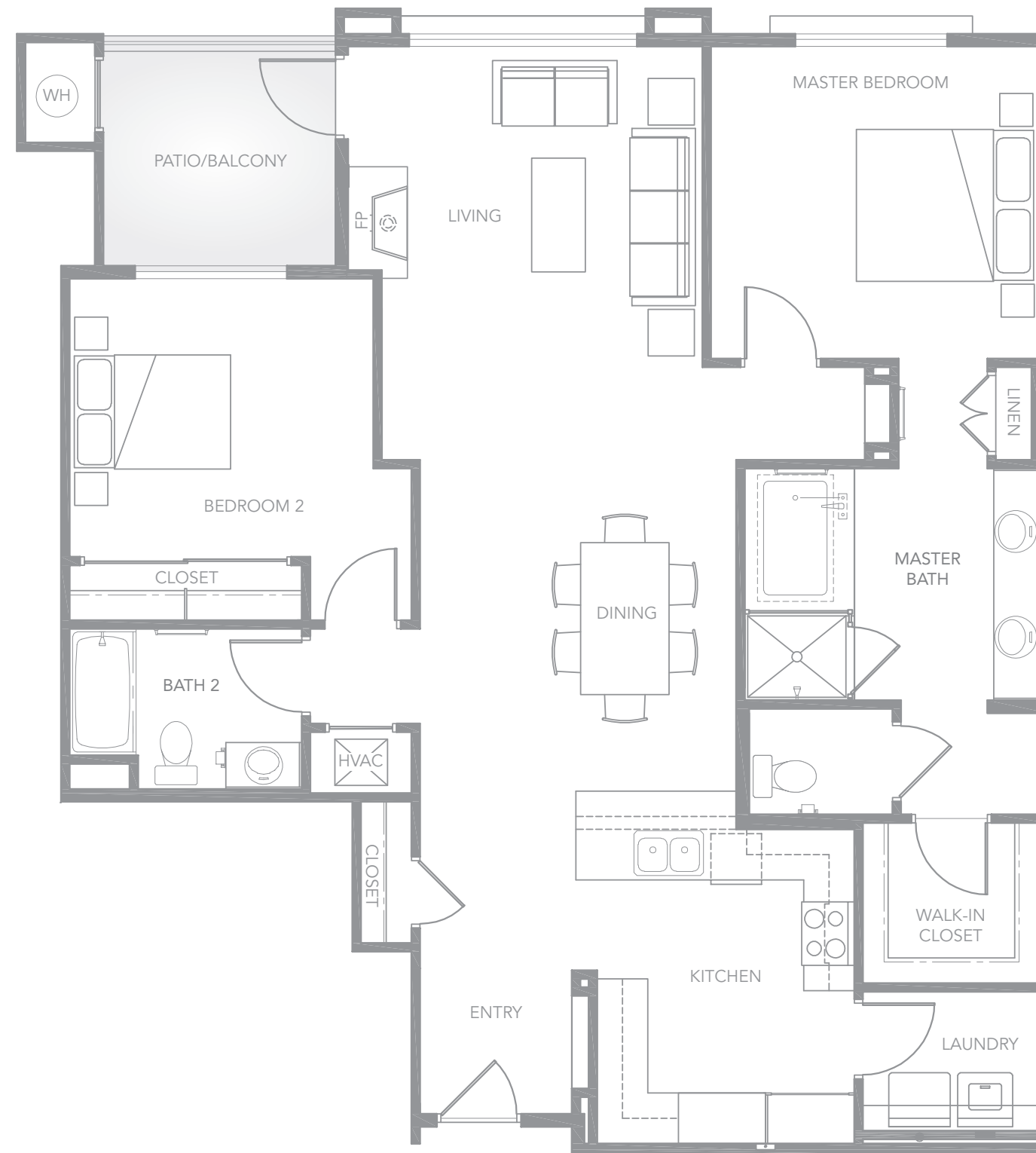
RESIDENCE A2

1,375 Sq. Ft. (Interior)
 90 – 164 Sq. Ft. (Exterior)
 2 Bedrooms
 2 Baths
 Gated Underground
 Resident Parking

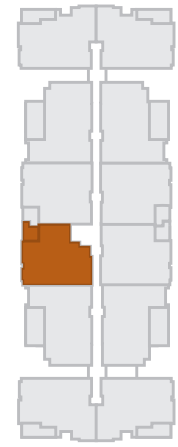
FEATURES

Granite kitchen countertops
 with decorative tile backsplash
 Dacor® professional stainless
 steel appliances
 Designer GROHE® faucets
 and fixtures
 Provenza® hardwood floors
 in the living areas
 Carrera marble countertops
 and deep soaking tub
 in master bath
 Private terraces or balconies

THE DESERT LOOKS DIFFERENT FROM THIS PERSPECTIVE



BUILDING D

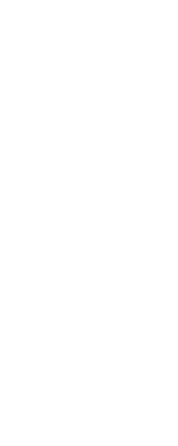


N. WOODMERE FAIRWAY – MOUNTAIN VIEWS

ARIZONA CANAL – WATERFRONT VIEWS



BUILDING E



4805 N. Woodmere Fairway, #D1001, Scottsdale, Arizona 85251

SageScottsdale.com

The computation of gross square footage will vary based upon the criteria used. The square footage information set forth herein may not be relied upon as the exact square footage of any unit. The developer reserves the right to make modifications in materials, specifications, floor plans, designs, pricing, scheduling and delivery of homes without prior notice. Brokers must accompany their client(s) and register them on their first visit to the Sales Gallery in order to be eligible for a broker commission. This is not a loan commitment, nor is it a guarantee of any kind. Exclusively represented by KRE Arizona, LLC.

