

SAGE

SCOTTSDALE

THE DESERT LOOKS DIFFERENT FROM THIS PERSPECTIVE



RESIDENCE C

1,659 Sq. Ft. (Interior)

217 – 320 Sq. Ft. (Exterior)

3 Bedrooms

2 Baths

Gated Underground
Resident Parking

FEATURES

Granite kitchen countertops
with decorative tile backsplash

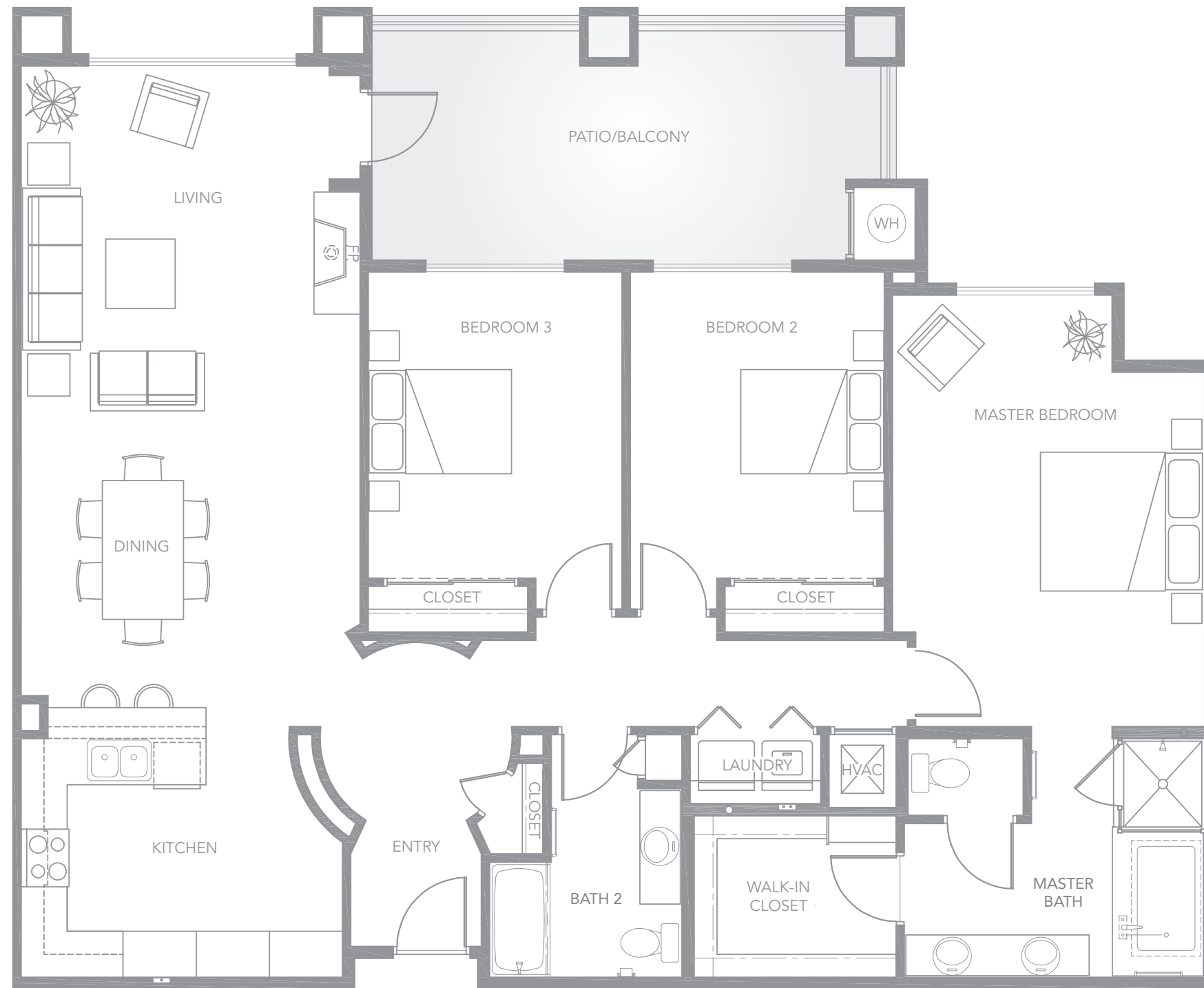
Dacor® professional stainless
steel appliances

Designer GROHE® faucets
and fixtures

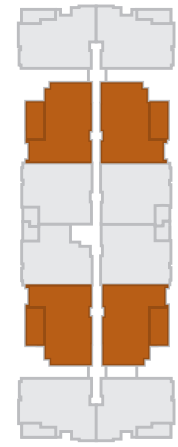
Provenza® hardwood floors
in the living areas

Carrera marble countertops
and deep soaking tub
in master bath

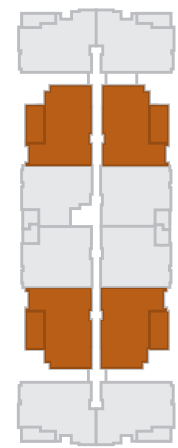
Private terraces or balconies



BUILDING D



N. WOODMERE FAIRWAY – MOUNTAIN VIEWS



BUILDING E

ARIZONA CANAL – WATERFRONT VIEWS



4805 N. Woodmere Fairway, #D1001, Scottsdale, Arizona 85251

SageScottsdale.com

The computation of gross square footage will vary based upon the criteria used. The square footage information set forth herein may not be relied upon as the exact square footage of any unit. The developer reserves the right to make modifications in materials, specifications, floor plans, designs, pricing, scheduling and delivery of homes without prior notice. Brokers must accompany their client(s) and register them on their first visit to the Sales Gallery in order to be eligible for a broker commission. This is not a loan commitment, nor is it a guarantee of any kind. Exclusively represented by KRE Arizona, LLC.

