

SAGE

SCOTTSDALE

THE DESERT LOOKS DIFFERENT FROM THIS PERSPECTIVE

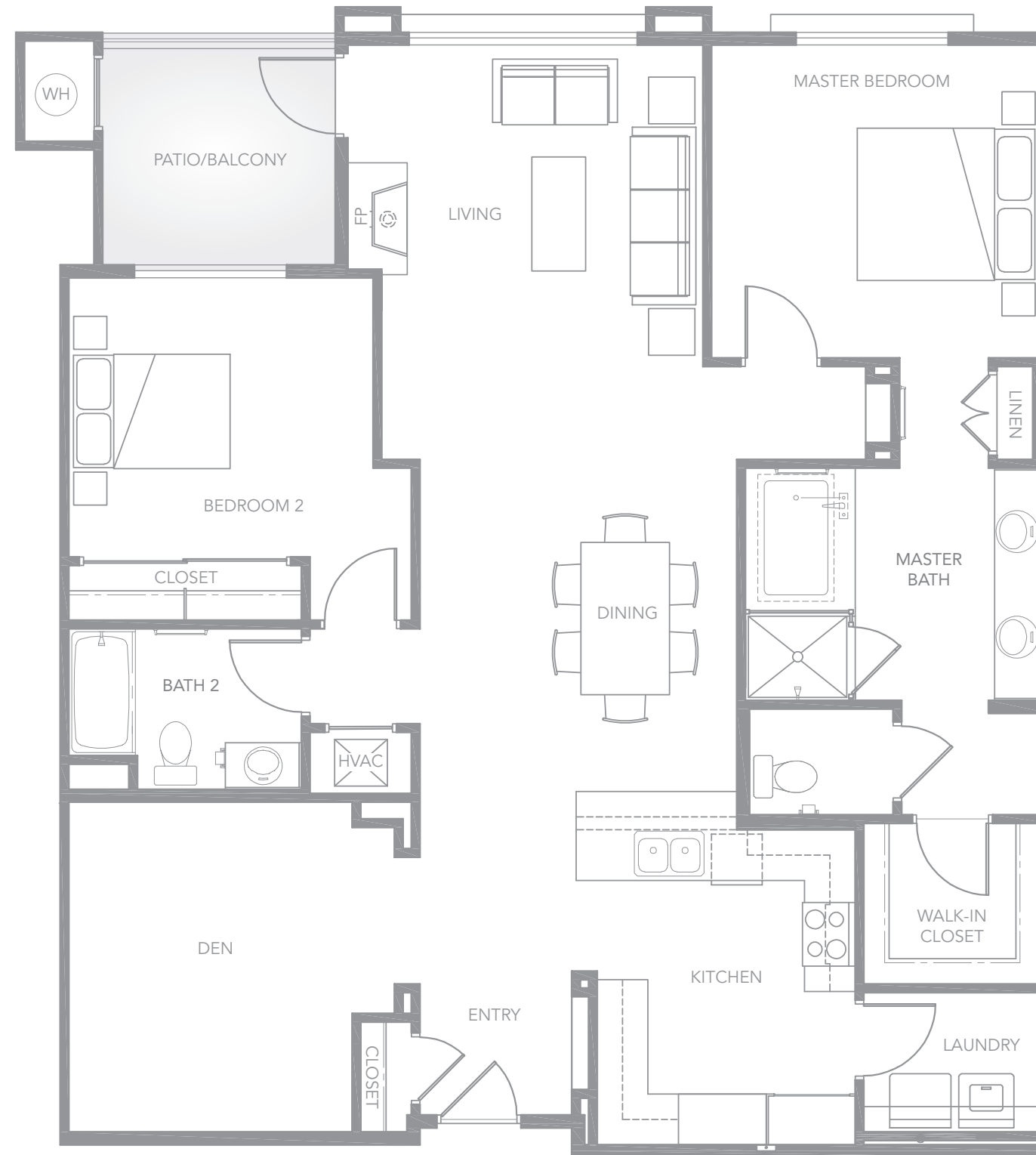


RESIDENCE A

- 1,550 Sq. Ft. (Interior)
- 90 – 165 Sq. Ft. (Exterior)
- 2 Bedrooms + Den
- 2 Baths
- Gated Underground Resident Parking

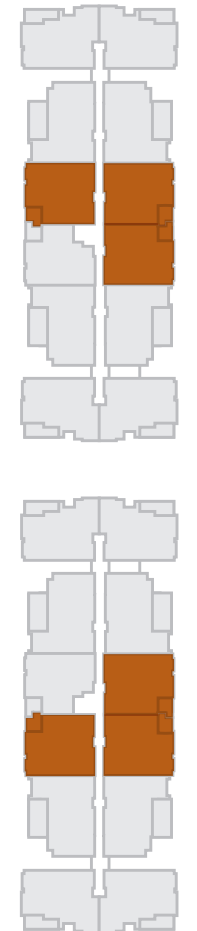
FEATURES

- Granite kitchen countertops with decorative tile backsplash
- Dacor® professional stainless steel appliances
- Designer GROHE® faucets and fixtures
- Provenza® hardwood floors in the living areas
- Carrera marble countertops and deep soaking tub in master bath
- Private terraces or balconies



BUILDING D

N. WOODMERE FAIRWAY – MOUNTAIN VIEWS



ARIZONA CANAL – WATERFRONT VIEWS



BUILDING E

4805 N. Woodmere Fairway, #D1001, Scottsdale, Arizona 85251

SageScottsdale.com

The computation of gross square footage will vary based upon the criteria used. The square footage information set forth herein may not be relied upon as the exact square footage of any unit. The developer reserves the right to make modifications in materials, specifications, floor plans, designs, pricing, scheduling and delivery of homes without prior notice. Brokers must accompany their client(s) and register them on their first visit to the Sales Gallery in order to be eligible for a broker commission. This is not a loan commitment, nor is it a guarantee of any kind. Exclusively represented by KRE Arizona, LLC.

